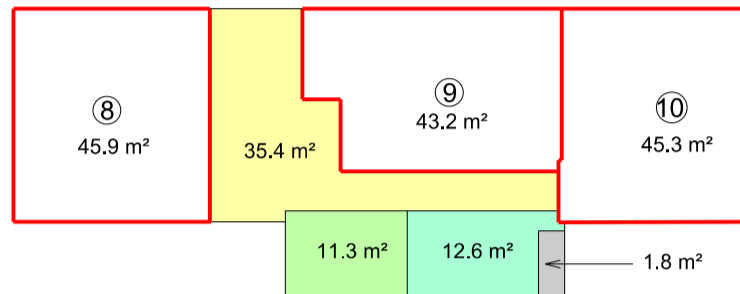
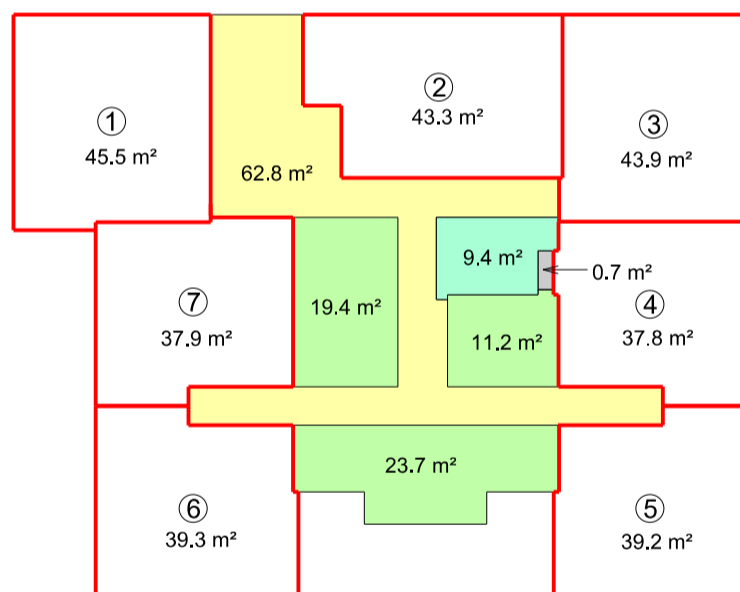




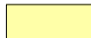
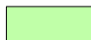
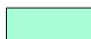



1. sal

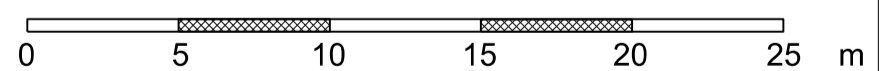


Stuen



SIGNATURFORKLARING

-  Adgangsarealer
-  Fælles boligarealer
-  Servicearealer
-  Udenomsrum
-  Boligarealer
-  Lejlighedsnummer



Bruttoetagearealer vedr. boliger på Engvej 21, 6230 Røde kro

Matr. nr. 1148 Brunde, Rise

J. 1135184

Mål 1:250

Sign.

Fremstillet:
24. nov. 2014

Init.
ESC/ek

LandSyd
LANDINSPEKTØRER

NØRREPORT 1,1. SAL
DK-6200 AABENRAA
TLF: +45 74 63 04 10
MAIL: AABENRAA@LANDSYD.DK

Kontorer: Aabenraa - Bramming - Esbjerg - Grindsted - Toftlund - Varde - Vejen